

◆ . NEW COLLECTION.....	01-11
◆ . HOUSEHOLD HAIR DRYER.....	12-24
◆ . SALON HAIR DRYER.....	25-26
◆ . TRAVEL HAIR DRYER.....	27-34
◆ . HAIR STRAIGHTENER.....	35-40
◆ . CURLING TONG.....	41-45
◆ . HOT AIR BRUSH.....	46
◆ . HAIR STRAIGHTENING COMB.....	47

NEW



HD-882

RECHARGEABLE HAIR DREER

- ◎ DC3.7V 2500mAh rechargeable battery (18650 battery),
- ◎ total 6pcs batteries;
- ◎ Usage time before recharge: 20 minutes;
- ◎ Infrared function;
- ◎ 360 Degree Non-electromagnetic Radiation;

- ◎ Button A: Hot & Cool wind;
- ◎ Button B: ON & OFF;
- ◎ Intelligent control related power supply display;
- ◎ battery charge and discharge protection;
- ◎ host abnormal protection;
- ◎ Air Nozzle Magnet Adsorption

- ◎ Adapter Sepcification.
- ◎ Input: 100V-240V, 50-60HZ
- ◎ Output: DC26V 920mA;



NEW

HD-885

220V-240V, 50-60Hz, 1400-1600W.

DC motor

Switch for 0-1-2 setting;

Cool shot function;

Seperate Nozzle;

Air Nozzle Magnet Adsorption



NEW

HD-883

220V-240V, 50-60Hz, 1400-1600W.

DC motor

Switch for 0-1-2 setting;

Cool shot function;

Seperate Nozzle;

Air Nozzle Magnet Adsorption





RECHARGEABLE AUTO HAIR CURLER

NEW



CT-609

- ◎ DC3.7V, 400mAh USB rechargeable battery (21700 battery);
- ◎ Infrared function;
- ◎ 2 Directions Curling
- ◎ Timing Setting;
- ◎ White LCD Digital Tube Display;
- ◎ Polyimide heating film heater;
- ◎ The maximum temperature: 200 °C,
- ◎ The minimum temperature : 140 °C;
- ◎ Power LED display;
- ◎ Automatic shut-off after 30 minutes;
- ◎ The product can not be turned on when charging
- ◎ Accessories:1m USB cord

HOUSEHOLD HAIR DRYER

NEW

HD-880T

Touch Screen Dryer

Function

- ⊙ Touch screen display to control speed & temperature
- ⊙ Concentrator
- ⊙ DC motor
- ⊙ Cool shot function
- ⊙ Ionic function & Ionic switch
- ⊙ 6 speeds & 8 heat settings
- ⊙ Lock switch for Touch screen function
- ⊙ Optional: Diffuser A or C
- ⊙ Removable end cap
- ⊙ Hang up hook
- ⊙ 220-240V 50-60Hz 1800-2200W
- ⊙ Size of gift box: 233 x97 x276 mm
- ⊙ Size of carton: 570x480x315mm 12pcs/CTN
- ⊙ Units 20' / 40' / 40' HQ : 3968 / 8145 / 9189pcs



CT-605

Rechargeable 3 IN 1 Hair styler set

- ⊙ Micro USB cable/wall adapter;
- ⊙ 2500mA Lithium ion battery (18650 battery) ;
- ⊙ Polyimide heating film heater, and
- ⊙ HEAT-UP quickly and safely;
- ⊙ Highest Temperatures:
 - ⊙ Straightener: 180 °C
 - ⊙ Curler: 180 °C
 - ⊙ Comb: 180 °C
- ⊙ Usage time before recharge: 30-40 minutes
- ⊙ Charge time: 3 hours
- ⊙ Accessories:1m USB cord

NEW



CT-622L

NEW

Function:

- ◎ On/off switch
- ◎ With LED Indication
- ◎ 360°swivel cord
- ◎ Adjustable Buttons For Temperature Control,
Adjustive temperature: 120°C/140°C/160°C/180°C/200°C
- ◎ 110-240V 50-60Hz 60W
- ◎ Size of gift box:395x100x45mm
- ◎ Size of carton: 410x415x295 mm 24pcs/CTN
- ◎ Units 20' / 40' / 40' HQ : 13680 / 28080 / 31680 pcs



JY-Z009

NEW

2 IN 1 FLUFFYING & STRAIGHTENING HAIR SET

- ◎ 110-240V~ 50-60Hz 50W(estimated);
- ◎ LCD Display
- ◎ PTC heater, Ceramic Coating aluminum plates;
- ◎ Start-up default temperature 190℃;
- ◎ The maximum temperature: 210℃,
- ◎ The minimum temperature : 130℃;
- ◎ High Bright Digital Tube Display;
- ◎ Lock & Unlock button;
- ◎ 360° Swivel cord;
- ◎ Automatic shut-off after 60 minutes.



HAIR STRAIGHTENER

NEW

JY-Z028

Function:

- ◎ Floating Plates
- ◎ On/off Switch
- ◎ 360°Swivel cord
- ◎ Max temperature 200 °C
- ◎ Universal voltage: 110 - 240V 50-60Hz 25W
- ◎ Size of carton: 475 x 330 x 400 mm 50pcs/CTN
- ◎ Units 20' / 40' / 40' HQ : 22750 / 46650 / 52650 pcs





HAIR STRAIGHTENER

NEW



JY-Z029

Function:

- ◎ Floating Plates
- ◎ LED display
- ◎ Buttons For Temperature Control
- ◎ On/off Switch
- ◎ 360°Swivel cord
- ◎ Max temperature 220 °C
- ◎ Universal voltage: 110 - 240V 50-60Hz 60W
- ◎ Size of gift box: 320 x 75 x 45 mm
- ◎ Size of carton: 475 x 330 x 400 mm 50pcs/CTN
- ◎ Units 20' / 40' / 40' HQ : 22750 / 46650 / 52650 pcs

JY-219

NEW

Function:

- ◎ 8 attachments
- ◎ 360°swivel cord
- ◎ 0-1-2-cool heat setting
- ◎ 220-240V 50-60Hz 1000-1200W
- ◎ Size of gift box: 400 x 280 x 67 mm
- ◎ Size of carton: 580 x 410 x 420 mm 12pcs/CTN
- ◎ Units 20' / 40' / 40' HQ: 3420 / 7020 / 7920 pcs

- A. Concentrator
- B. Half brush#1
- C. Half brush#2
- D. Small Point roll brush
- E. Big point roll brush
- F. Hair roller small Ø35mm
- G. Hair roller medium Ø40mm
- H. Hair roll big Ø55mm



A B C D E F G H

HAIR DRYER

HOUSEHOLD HAIR DRYER

RETRACTABLE HAIR DRYER



HD-877

Function

- ⊙ Retractable cord
- ⊙ Concentrator
- ⊙ DC motor
- ⊙ Cool shot function
- ⊙ Optional: Ionic function & diffuser A or C
- ⊙ 2 speeds & 3 heat settings
- ⊙ Removable end cap
- ⊙ Hang up hook
- ⊙ 220-240V 50-60Hz 2000W
- ⊙ Size of gift box: 223 x 98 x 250 mm
- ⊙ Size of carton: 515 x 466 x 305mm 12pcs/CTN
- ⊙ Units 20' / 40' / 40' HQ: 4668 / 9588 / 10824pcs



HD-872

Function

- ⊙ Retractable cord
- ⊙ Concentrator
- ⊙ DC motor
- ⊙ Cool shot function
- ⊙ Optional: Ionic function & diffuser A or C
- ⊙ 2 speeds & 3 heat settings
- ⊙ Removable end cap
- ⊙ Hang up hook
- ⊙ 220-240V 50-60Hz 2000W
- ⊙ Size of gift box: 223 x 98 x 236 mm
- ⊙ Size of carton: 490 x 466 x 305mm 12pcs/CTN
- ⊙ Units 20' / 40' / 40' HQ: 4908 / 10080 / 11376pcs

HAIR DRYER



HD-880

Function

- ⊙ Concentrator
- ⊙ DC motor
- ⊙ Cool shot function
- ⊙ Optional: Ionic function & diffuser A or C
- ⊙ 2 speeds & 3 heat settings
- ⊙ Removable end cap
- ⊙ Hang up hook
- ⊙ 220-240V 50-60Hz 1800-2200W
- ⊙ Size of gift box: 233 x97 x276 mm
- ⊙ Size of carton: 570x480x315mm 12pcs/CTN
- ⊙ Units 20' / 40' / 40' HQ : 3968 / 8145 / 9189pcs



HD-927

Function

- ⊙ Concentrator
- ⊙ DC motor
- ⊙ Cool shot function
- ⊙ Optional: Ionic function & Diffuser D or E
- ⊙ 2 speeds & 3 heat settings
- ⊙ Removable end cap
- ⊙ Hang up hook
- ⊙ 220-240V 50-60Hz 1800-2200W
- ⊙ Size of gift box: 220x95x270 mm
- ⊙ Size of carton: 585x285x455mm 12pcs/CTN
- ⊙ Units 20' / 40' / 40' HQ : 4380 / 9120 / 10680pcs



HOUSEHOLD HAIR DRYER



HD-879

Function

- ⊙ Concentrator
- ⊙ DC motor
- ⊙ Cool shot function
- ⊙ Optional: Ionic function & diffuser A or C
- ⊙ 2 speeds & 3 heat settings
- ⊙ Removable end cap
- ⊙ Hang up hook
- ⊙ 220-240V 50-60Hz 1800-2200W
- ⊙ Size of gift box: 230 x92 x270 mm
- ⊙ Size of carton: 555x290x480mm 12pcs/CTN
- ⊙ Units 20' / 40' / 40' HQ : 4428 / 9084 / 10248pcs



HOUSEHOLD HAIR DRYER

HD-866

Function

- ⊙ Concentrator
- ⊙ DC motor
- ⊙ Cool shot function
- ⊙ Optional: Ionic function & diffuser A or C
- ⊙ 2 speeds & 3 heat settings
- ⊙ Removable end cap
- ⊙ Hang up hook
- ⊙ 220-240V 50-60Hz 1800-2200W
- ⊙ Size of gift box: 215 x 90 x 265 mm
- ⊙ Size of carton: 558 x 442 x 285mm 12pcs/CTN
- ⊙ Units 20' / 40' / 40' HQ : 4860 / 9984 / 11268pcs



HD-873

Function

- ⊙ Concentrator
- ⊙ DC motor
- ⊙ Cool shot function
- ⊙ Optional: Ionic function & diffuser A or C
- ⊙ 2 speeds & 3 heat settings
- ⊙ Removable end cap
- ⊙ Hang up hook
- ⊙ 220-240V 50-60Hz 1800-2200W
- ⊙ Size of gift box: 230 x 90 x 276 mm
- ⊙ Size of carton: 560x470x296mm 12pcs/CTN
- ⊙ Units 20' / 40' / 40' HQ : 4392 / 9012 / 10164pcs



HD-867



Function

- ⊙ Concentrator
- ⊙ DC motor
- ⊙ Cool shot function
- ⊙ Optional: Ionic function & diffuser A or C
- ⊙ 2 speeds & 3 heat settings
- ⊙ Removable end cap
- ⊙ Hang up hook
- ⊙ 220-240V 50-60Hz 1800-2200W
- ⊙ Size of gift box: 220 x 85 x 250 mm
- ⊙ Size of carton: 530 x 450 x 270mm 12pcs/CTN
- ⊙ Units 20' / 40' / 40' HQ: 5316 / 10896 / 12300pcs

HD-865



Function

- ⊙ Concentrator
- ⊙ DC motor
- ⊙ Cool shot function
- ⊙ Optional: Ionic function & diffuser A or C
- ⊙ 2 speeds & 3 heat settings
- ⊙ Removable end cap
- ⊙ Hang up hook
- ⊙ 220-240V 50-60Hz 1800-2200W
- ⊙ Size of gift box: 215 x 90 x 265 mm
- ⊙ Size of carton: 558 x 442 x 285 mm 12pcs/CTN
- ⊙ Units 20' / 40' / 40' HQ: 5232 / 10728 / 12108 pcs

HOUSEHOLD HAIR DRYER



HD-861

Function

- ⊙ Concentrator
- ⊙ DC motor
- ⊙ Cool shot function
- ⊙ Optional: Ionic function & diffuser A or C
- ⊙ 2 speeds & 3 heat settings
- ⊙ Removable end cap
- ⊙ Hang up hook
- ⊙ 220-240V 50-60Hz 1800-2200W
- ⊙ Size of gift box: 220 x 95 x 278 mm
- ⊙ Size of carton: 590 x 453 x 295 mm 12pcs/CTN
- ⊙ Units 20' / 40' / 40' HQ : 4344 / 8904 / 10056 pcs



HD-870

Function

- ⊙ Concentrator
- ⊙ Foldable handle
- ⊙ DC motor
- ⊙ Cool shot function
- ⊙ Optional: Ionic function & diffuser A or C
- ⊙ 2 speeds & 3 heat settings
- ⊙ Removable end cap
- ⊙ Hang up hook
- ⊙ 230-240V 50-60Hz 1800-2000W
- ⊙ Size of gift box: 215 x 85 x 240 mm
- ⊙ Size of gift carton: 530x440x260 mm 12pcs/CTN
- ⊙ Units 20' / 40' / 40' HQ : 5640 / 11580 / 13068 pcs



HD-868

Function

- ◎ Concentrator
- ◎ DC motor
- ◎ Cool shot function
- ◎ Optional: Ionic function & diffuser A or C
- ◎ 2 speeds & 3 heat settings
- ◎ Removable end cap
- ◎ Hang up hook
- ◎ 220-240V 50-60Hz 1800-2200W
- ◎ Size of gift box: 215 x 95 x 278 mm
- ◎ Size of carton: 588 x 442 x 298 mm 12pcs/CTN
- ◎ Units 20' / 40' / 40' HQ : 4416 / 9072 / 10236 pcs



HD-871

Function

- ◎ Concentrator
- ◎ DC motor
- ◎ Cool shot function
- ◎ Optional: Ionic function & diffuser A or C or Finger diffuser
- ◎ 2 speeds & 3 heat settings
- ◎ Removable end cap
- ◎ Hang up hook
- ◎ 220-240V 50-60Hz 1800-2200W
- ◎ Size of gift box: 215 x 90 x 265 mm
- ◎ Size of carton: 558 x 442 x 285 mm 12pcs/CTN
- ◎ Units 20' / 40' / 40' HQ : 4680 / 9624 / 10860 pcs

HD-800

Function

- ⊙ Concentrator
- ⊙ DC motor
- ⊙ Cool shot function
- ⊙ Optional: Ionic function & diffuser A or C
- ⊙ 2 speeds & 3 heat settings
- ⊙ Removable end cap
- ⊙ Hang up hook
- ⊙ HD-800A: 220-240V 50-60Hz 1800-2200W
- ⊙ HD-800: 220-240V 50-60Hz 1800-2000W
- ⊙ Size of gift box: 230 x 95 x 276 mm
- ⊙ Size of carton: 590 x 470 x 295 mm 12pcs/CTN
- ⊙ Units 20' / 40' / 40' HQ : 4176 / 8580 / 9672 pcs



HOUSEHOLD HAIR DRYER

HD-878

Function

- ⊙ Concentrator
- ⊙ DC motor
- ⊙ Cool shot function
- ⊙ Optional: Ionic function & diffuser A or C
- ⊙ 2 speeds & 3 heat settings
- ⊙ Removable end cap
- ⊙ Hang up hook
- ⊙ 220-240V 50-60Hz 1800-2200W
- ⊙ Size of gift box: 230 x 92 x 270 mm
- ⊙ Size of carton: 555x290x480mm 12pcs/CTN
- ⊙ Units 20' / 40' / 40' HQ : 4428 / 9084 / 10248pcs



HD-818

Function

- ⊙ Concentrator
- ⊙ DC motor
- ⊙ Cool shot function
- ⊙ Optional: Ionic function & diffuser A or C
- ⊙ 2 speeds & 3 heat settings
- ⊙ Removable end cap
- ⊙ Hang up hook
- ⊙ 220-240V 50-60Hz 1800-2200W
- ⊙ Size of gift box: 240 x 102 x 285 mm
- ⊙ Size of carton: 630 x 480 x 305 mm 12pcs/CTN
- ⊙ Units 20' / 40' / 40' HQ : 3708 / 7608 / 8592 pcs



HD-862

Function

- ⊙ Concentrator
- ⊙ DC motor
- ⊙ Cool shot function
- ⊙ Optional: Ionic function & diffuser A or C
- ⊙ 2 speeds & 3 heat settings
- ⊙ Removable end cap
- ⊙ Hang up hook
- ⊙ 220-240V 50-60Hz 1600-2000W
- ⊙ Size of gift box: 215 x 90 x 265 mm
- ⊙ Size of carton: 558 x 442 x 285 mm 12pcs/CTN
- ⊙ Units 20' / 40' / 40' HQ : 4680 / 9624 / 10860 pcs



HD-920

Function

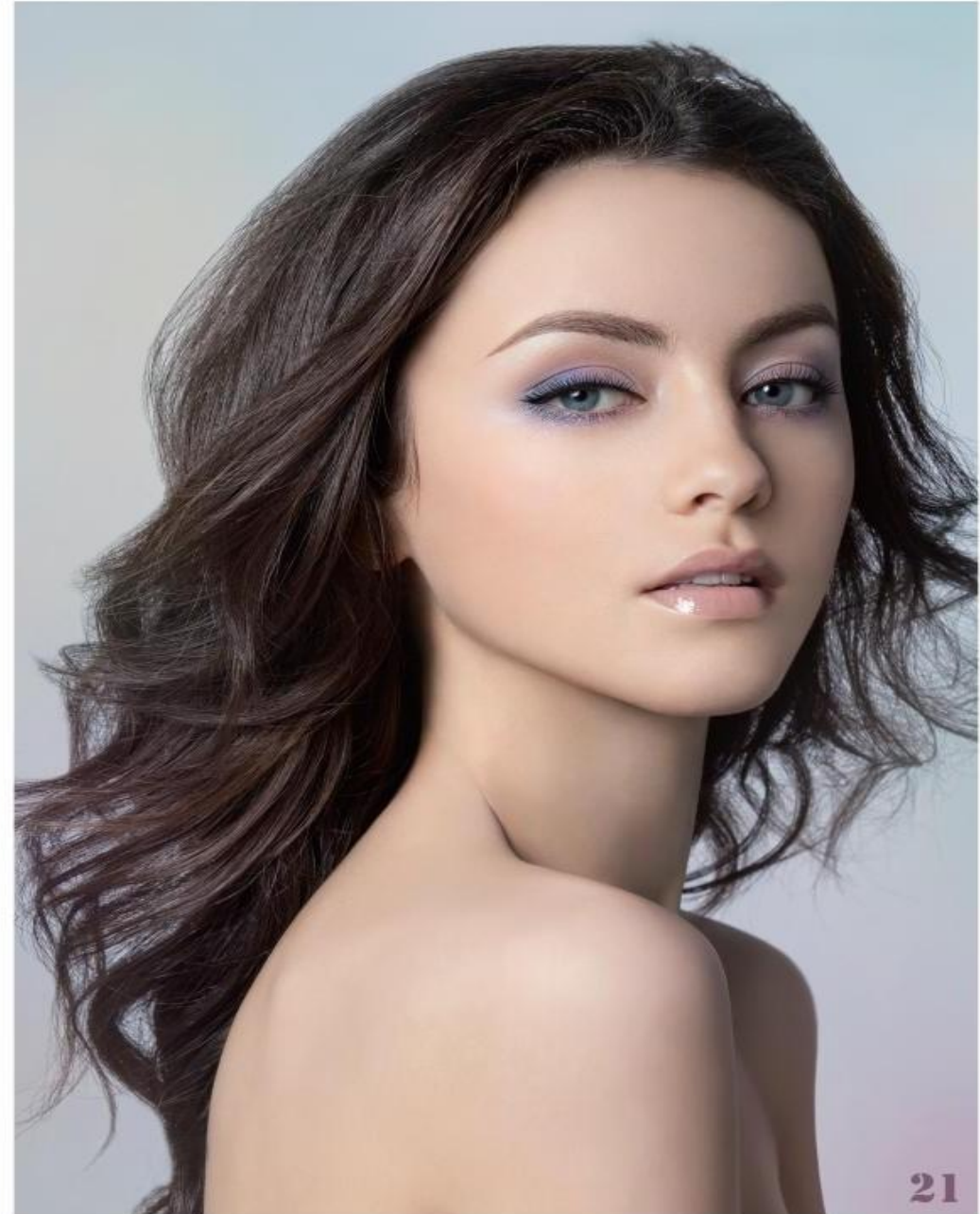
- ⊙ Concentrator
- ⊙ DC motor
- ⊙ Cool shot function
- ⊙ Optional: Ionic function & Diffuser D or E
- ⊙ 2 speeds & 3 heat settings
- ⊙ Removable end cap
- ⊙ Hang up hook
- ⊙ 220-240V 50-60Hz 1800-2200W
- ⊙ Size of gift box: 220x95x270 mm
- ⊙ Size of carton: 585x285x455 mm 12pcs/CTN
- ⊙ Units 20' / 40' / 40' HQ : 4380 / 9120/10680 pcs



HD-921

Function

- ⊙ Concentrator
- ⊙ DC motor
- ⊙ Cool shot function
- ⊙ Optional: Ionic function & Diffuser D or E
- ⊙ 2 speeds & 3 heat settings
- ⊙ Removable end cap
- ⊙ Hang up hook
- ⊙ 220-240V 50-60Hz 1800-2200W
- ⊙ Size of gift box: 230x96x275 mm
- ⊙ Size of carton: 590x290x475 mm 12pcs/CTN
- ⊙ Units 20' / 40' / 40' HQ : 4080/ 8460 / 9960 pcs



HD-819

Function

- ⊗ Concentrator
- ⊗ Foldable handle
- ⊗ DC motor
- ⊗ Cool shot function
- ⊗ Optional: Ionic function & diffuser A or C
- ⊗ 2 speeds & 3 heat settings
- ⊗ Removable end cap
- ⊗ Hang up hook
- ⊗ 220-240V 50-60Hz 1600-1800W
- ⊗ Size of gift box: 130 x 95 x 245 mm
- ⊗ Size of carton: 535 x 300 x 265 mm 12pcs/CTN
- ⊗ Units 20' / 40' / 40' HQ : 7944 / 16320 / 18420 pcs



HD-801

Function

- ⊗ Concentrator
- ⊗ DC motor
- ⊗ Cool shot function
- ⊗ Optional: Ionic function & diffuser A or C
- ⊗ 2 speeds & 3 heat settings
- ⊗ Removable end cap
- ⊗ Hang up hook
- ⊗ 220-240V 50-60Hz 1800-2200W
- ⊗ Size of gift box: 236 x 96 x 265 mm
- ⊗ Size of carton: 592 x 482 x 285 mm 12pcs/CTN
- ⊗ Units 20' / 40' / 40' HQ : 4200 / 8628 / 9732 pcs



HD-922

Function

- ⊙ Concentrator
- ⊙ DC motor
- ⊙ Cool shot function
- ⊙ Optional: Ionic function & Diffuser D or E
- ⊙ 2 speeds & 3 heat settings
- ⊙ Removable end cap
- ⊙ Hang up hook
- ⊙ 220-240V 50-60Hz 1800-2200W
- ⊙ Size of gift box: 230x96x285 mm
- ⊙ Size of carton: 590x300x475mm 12pcs/CTN
- ⊙ Units 20' / 40' / 40' HQ: 3936 / 8184 / 9600pcs



HD-923

Function

- ⊙ Concentrator
- ⊙ DC motor
- ⊙ Cool shot function
- ⊙ Optional: Ionic function & Diffuser D or E
- ⊙ 2 speeds & 3 heat settings
- ⊙ Removable end cap
- ⊙ Hang up hook
- ⊙ 220-240V 50-60Hz 1800-2200W
- ⊙ Size of gift box: 245x100x290 mm
- ⊙ Size of carton: 615x250x595mm 12pcs/CTN
- ⊙ Units 20' / 40' / 40' HQ: 3600 / 7500 / 8820pcs





HD-928

Function

- ⊙ Concentrator
- ⊙ DC motor
- ⊙ Cool shot function
- ⊙ Optional: Ionic function & Diffuser D or E
- ⊙ 2 speeds & 3 heat settings
- ⊙ Removable end cap
- ⊙ Hang up hook
- ⊙ 220-240V 50-60Hz 1800-2200W
- ⊙ Size of gift box: 220x95x270 mm
- ⊙ Size of carton: 585x285x455mm 12pcs/CTN
- ⊙ Units 20' / 40' / 40' HQ: 4380 / 9120 / 10680pcs



HD-925

Function

- ⊙ Concentrator
- ⊙ DC motor
- ⊙ Cool shot function
- ⊙ Optional: Ionic function & Diffuser D or E
- ⊙ 2 speeds & 3 heat settings
- ⊙ Removable end cap
- ⊙ Hang up hook
- ⊙ 220-240V 50-60Hz 1800-2200W
- ⊙ Size of gift box: 233x96x270 mm
- ⊙ Size of carton: 590x270x485mm 12pcs/CTN
- ⊙ Units 20' / 40' / 40' HQ: 4140 / 8640 / 10140pcs

HOUSEHOLD HAIR DRYER

HD-8011

Function:

- ◎ Concentrator
- ◎ DC motor
- ◎ Cool shot function
- ◎ Optional: Ionice function & diffuser
- ◎ 2 Speeds & 3 Heat Settings
- ◎ Removable end cap
- ◎ Hang up hook
- ◎ 220-240V~ 50-60Hz 2000W-2400W
- ◎ Size of giftbox: 235 x97x292mm
- ◎ Size of carton: 490x305x605mm 12pcs/CTN
- ◎ Unit 20'/40'/40' HQ: 3576/7560/8760 pcs

HD-8010

Function:

- ◎ Concentrator
- ◎ DC motor
- ◎ Cool shot function
- ◎ Foldable handle
- ◎ Optional: Ionice function & diffuser
- ◎ Switch for 0-1-2 setting
- ◎ Removable end cap
- ◎ Hang up hook
- ◎ 220-240V~ 50-60Hz 2000W-2400W
- ◎ Size of giftbox: 140x97x235mm
- ◎ Size of carton: 435x405x255mm 12pcs/CTN
- ◎ Unit 20'/40'/40' HQ: 7356/15276/18000 pcs

HD-8008

Function:

- ◎ Concentrator
- ◎ DC motor
- ◎ Cool shot function
- ◎ Optional: Ionice function & diffuser
- ◎ 2 Speeds & 3 Heat Settings
- ◎ Removable end cap
- ◎ Hang up hook
- ◎ 220-240V~ 50-60Hz 2000W-2400W
- ◎ Size of giftbox: 221 x96x282mm
- ◎ Size of carton: 460x310x585mm 12pcs/CTN
- ◎ Unit 20' /40' /40' HQ: 3852/8304/9780 pcs



HD-8009

Function:

- ◎ Concentrator
- ◎ DC motor
- ◎ Cool shot function
- ◎ Optional: Ionice function & diffuser
- ◎ 2 Speeds & 3 Heat Settings
- ◎ Removable end cap
- ◎ Hang up hook
- ◎ 220-240V~ 50-60Hz 2000W-2400W
- ◎ Size of giftbox: 235 x97x292mm
- ◎ Size of carton: 490x305x605mm 12pcs/CTN
- ◎ Unit 20' /40' /40' HQ: 3852/8323/9396 pcs





HD-8006

Function:

- ◎ Concentrator
- ◎ DC motor
- ◎ Cool shot function
- ◎ Optional: Ionice function & diffuser
- ◎ 2 Speeds & 3 Heat Settings
- ◎ Removable end cap
- ◎ Hang up hook
- ◎ 220-240V~ 50-60Hz 2000W-2400W
- ◎ Size of giftbox: 230 x97x282mm
- ◎ Size of carton: 475x305x585mm 12pcs/CTN
- ◎ Unit 20'/40'/40'HQ: 3804/8040/9456 pcs



HD-8007

Function:

- ◎ Concentrator
- ◎ DC motor
- ◎ Cool shot function
- ◎ Optional: Ionice function & diffuser
- ◎ 2 Speeds & 3 Heat Settings
- ◎ Removable end cap
- ◎ Hang up hook
- ◎ 220-240V~ 50-60Hz 1900W-2300W
- ◎ Size of giftbox: 195x100x290mm
- ◎ Size of carton: 405x315x595mm 12pcs/CTN
- ◎ Unit 20'/40'/40'HQ: 4320/8844/10584 pcs



HD-8001

Function:

- ⊙ Concentrator
- ⊙ DC motor
- ⊙ Cool shot function
- ⊙ Optional: Ionice function & diffuser
- ⊙ 2 Speeds & 3 Heat Settings
- ⊙ Removable end cap
- ⊙ Hang up hook
- ⊙ 220-240V~ 50-60Hz 2000W-2400W
- ⊙ Size of giftbox: 230x97x282mm
- ⊙ Size of carton: 475x305x585mm 12pcs/CTN
- ⊙ Unit 20'/40'/40'HQ: 4176/8940/9960 pcs



HD-8005

Function:

- ⊙ Concentrator
- ⊙ DC motor
- ⊙ Cool shot function
- ⊙ Optional: Ionice function & diffuser
- ⊙ Switch for 0-1-2 settings
- ⊙ Hang up hook
- ⊙ 220-240V~ 50-60Hz 1800W-2200W
- ⊙ Size of giftbox: 190 x85x264mm
- ⊙ Size of carton: 395x275x550mm 12pcs/CTN
- ⊙ Unit 20'/40'/40'HQ: 5676/11796/14100 pcs



HOUSEHOLD HAIR DRYER

HD-8002

Function:

- ◎ Concentrator
- ◎ DC motor
- ◎ Cool shot function
- ◎ Optional: Ionice function & diffuser
- ◎ 2 Speeds & 3 Heat Settings
- ◎ Removable end cap
- ◎ Hang up hook
- ◎ 220-240V~ 50-60Hz 2000W-2400W
- ◎ Size of giftbox: 230x97x282mm
- ◎ Size of carton: 475x305x585mm 12pcs/CTN
- ◎ Unit 20'/40'/40'HQ: 3804/8040/9456 pcs



HD-8003

Function:

- ◎ Concentrator
- ◎ DC motor
- ◎ Cool shot function
- ◎ Optional: Ionice function & diffuser
- ◎ Switch for 0-1-2 settings
- ◎ Hang up hook
- ◎ 220-240V~ 50-60Hz 1800W-2200W
- ◎ Size of giftbox: 230x97x282mm
- ◎ Size of carton: 475x305x585mm 12pcs/CTN
- ◎ Unit 20'/40'/40'HQ: 3804/8040/9456 pcs



SALON HAIR DRYER

HD-820

Function

- ⊙ Concentrator
- ⊙ AC motor or DC motor
- ⊙ Cool shot function
- ⊙ Optional: Ionic function & diffuser A or B
- ⊙ 2 speeds & 3 heat settings
- ⊙ Removable end cap
- ⊙ Hang up hook
- ⊙ HD-820: 220-240V 50-60Hz 1800-2000W
- ⊙ HD-820D: 220-240V 50-60Hz 1600-2000W
- ⊙ Size of gift box: 185 x 92 x 265 mm
- ⊙ Size of carton: 550 x 390 x 290 mm 12pcs/CTN
- ⊙ Units 20' / 40' / 40' HQ : 5496 / 11280 / 12732 pcs



DIFFUSER



Diffuser A



Diffuser B



Diffuser C



Diffuser D



Diffuser E



Finger Diffuser

HD-836

Function

- ⊙ AC motor or DC motor
- ⊙ Concentrator
- ⊙ Cool shot function
- ⊙ Optional: Ionic function & diffuser A or B
- ⊙ 2 speeds & 3 heat settings
- ⊙ Removable end cap
- ⊙ Hang up hook
- ⊙ 220-240V 50-60Hz 1600-2000W
- ⊙ Size of gift box: 185 x 92 x 265 mm
- ⊙ Size of carton: 570 x 380 x 285 mm 12pcs/CTN
- ⊙ Units 20' / 40' / 40' HQ : 5566 / 11412 / 11876 pcs



SALON HAIR DRYER

HD-901

Function

- ⊙ AC motor
- ⊙ Concentrator
- ⊙ Cool shot function
- ⊙ Optional: Ionic function & diffuser A or B
- ⊙ 2 speeds & 3 heat settings
- ⊙ Removable end cap
- ⊙ Hang up hook
- ⊙ 220-240V 50-60Hz 1800-2200W
- ⊙ Size of gift box: 225 x 112 x 260 mm
- ⊙ Size of carton: 540 x 470 x 350 mm 12pcs/CTN
- ⊙ Units 20' / 40' / 40' HQ : 3852 / 7908 / 8916 pcs





HD-8001

Function:

- ◎ Concentrator
- ◎ AC motor
- ◎ Cool shot function
- ◎ Optional: Ionice function & diffuser
- ◎ 2 Speeds & 3 Heat Settings
- ◎ Removable end cap
- ◎ Hang up hook
- ◎ 220-240V ~ 50-60Hz 2000W-2400W
- ◎ Size of giftbox: 195x100x290mm
- ◎ Size of carton: 405x315x595mm 12pcs/CTN
- ◎ Unit 20'/40'/40'HQ: 4320/8844/10584 pcs

SALON HAIR DRYER

HD-807

Function:

- ◎ Foldable handle
- ◎ DC motor
- ◎ Switch for 0-1-2 setting
- ◎ Hang up hook
- ◎ Optional: Dual Voltage
- ◎ HD-807: 220-230V 50-60Hz 800-1000W
- ◎ HD-807A: 220-240V 50-60Hz 1200W
- ◎ HD-807S: 115/230V 50-60Hz 1000W
- ◎ Size of gift box: 105 x 68 x 185 mm
- ◎ Size of carton: 435 x 385 x 230 mm 24pcs/CTN
- ◎ Units 20' / 40' / 40' HQ: 17760/ 36456 / 41136 pcs



TRAVEL HAIR DRYER

HD-832

Function:

- ◎ Foldable handle
- ◎ DC motor
- ◎ Concentrator
- ◎ Switch for 0-cool-1-2 setting
- ◎ Hang up hook
- ◎ 220-240V 50-60Hz 1200-1400W
- ◎ Size of gift box: 220 x 80 x 115 mm
- ◎ Size of carton: 500x473x240 mm 24pcs/CTN
- ◎ Units 20' / 40' / 40' HQ: 12048/ 24720 / 27888 pcs





TRAVEL HAIR DRYER

HD-823

Function:

- ⊙ DC motor
- ⊙ Switch for 0-1-2 setting
- ⊙ Hang up hook
- ⊙ 220-240V 50-60Hz 1000-1200W
- ⊙ Size of gift box: 170x85x230 mm
- ⊙ Size of carton: 525x355x475 mm 24pcs/CTN
- ⊙ Units 20' / 40' / 40' HQ : 7560/ 15600 / 18240 pcs



HD-826

Function:

- ⊙ DC motor
- ⊙ Concentrator
- ⊙ cool shot function
- ⊙ Switch for 0-1-2 setting
- ⊙ Hang up hook
- ⊙ Optional: Ionic Function
- ⊙ 220-240V 50-60Hz 1000-1200W
- ⊙ Size of gift box: 170x85x230 mm
- ⊙ Size of carton: 525x355x475 mm 24pcs/CTN
- ⊙ Units 20' / 40' / 40' HQ : 7560/ 15600 / 18240 pcs





HD-811

Function:

- ◎ Foldable handle
- ◎ DC motor
- ◎ Concentrator
- ◎ Switch for 0-1-2 setting
- ◎ Hang up hook
- ◎ HD-811: 220-240V 50-60Hz 1400W
- ◎ HD-811S: 120/230V 50-60Hz 1200W
- ◎ Size of gift box: 195 x 78 x 135 mm
- ◎ Size of carton: 500 x 400 x 290 mm 24pcs/CTN
- ◎ Units 20' / 40' / 40' HQ : 12048/ 24720 / 27888 pcs



HD-825

Function:

- ◎ Foldable handle
- ◎ DC motor
- ◎ Switch for 0-1-2 setting
- ◎ Hang up hook
- ◎ Optional: Ionic& Dual Voltage
- ◎ HD-825:220-240V 50-60Hz 1000-1200W
- ◎ HD-825S:120/230V 50-60Hz 1000W
- ◎ Size of gift box: 115x75x180 mm
- ◎ Size of carton: 475x375x255 mm 24pcs/CTN
- ◎ Units 20' / 40' / 40' HQ : 15048 / 30888 / 34872 pcs

HD-822

Function:

- ⊙ Foldable handle
- ⊙ DC motor
- ⊙ Switch for 0-1-2 setting
- ⊙ Hang up hook
- ⊙ Optional: Cool shot function / Dual Voltage
- ⊙ HD-822: 220-240V 50-60Hz 1000W
- ⊙ HD-822A: 220-240V 50-60Hz 1000-1200W
- ⊙ HD-822S: 110-120V/220-240V 50-60Hz 1000-1200W
- ⊙ HD-822C: 220-240V 50-60Hz 1000-1200W
- ⊙ Size of gift box: 118x68x215 mm
- ⊙ Size of carton: 445 x 423 x 256 mm 24pcs/CTN
- ⊙ Units 20' / 40' / 40' HQ : 14184/ 29136 / 32856 pcs



TRAVEL HAIR DRYER

HD-821

Function:

- ⊙ Foldable handle
- ⊙ DC motor
- ⊙ Switch for 0-1-2 setting
- ⊙ Hang up hook
- ⊙ Optional Cool shot function / Dual Voltage
- ⊙ HD-821: 220-230V 50-60Hz 800-1000W
- ⊙ HD-821B: 220-240V 50-60Hz 1000-1200W
- ⊙ HD-821C: 220-240V 50-60Hz 1000-1200W
- ⊙ HD-821D: 220-240V 50-60Hz 600-800W
- ⊙ HD-821S: 110-120V/220-240V 50-60Hz 1000-1200W
- ⊙ Size of gift box: 205 x 65 x 105 mm
- ⊙ Size of carton: 425 x 400 x 230 mm 24pcs/CTN
- ⊙ Units 20' / 40' / 40' HQ : 17232/ 35352 / 39888 pcs



HD-805

Function:

- ⊙ Foldable handle
- ⊙ DC motor
- ⊙ Concentrator
- ⊙ Switch for 0-1-2 setting
- ⊙ Hang up hook
- ⊙ Optional: Ionic / Dual Voltage / Cool shot function
- ⊙ HD-805/HD-805F: 220-240V 50-60Hz 1400W
- ⊙ HD-805C/HD-805CF: 220-240V 50-60Hz 1600W
- ⊙ HD-805SC: 120/230V 50-60Hz 1100/1600W
- ⊙ Size of gift box: 215 x 80 x 115 mm
- ⊙ Size of carton: 500 x 440 x 250 mm 24pcs/CTN
- ⊙ Units 20' / 40' / 40' HQ : 12408/ 25512 / 28776 pcs



HD-831

Function:

- ⊙ Foldable handle
- ⊙ DC motor
- ⊙ Concentrator
- ⊙ Switch for 0-1-2 setting
- ⊙ Hang up hook
- ⊙ Optional: Ionic Function/ Dual Voltage
- ⊙ HD-831: 220-240V 50-60Hz 1200-1600W
- ⊙ HD-831F: 220-240V 50-60Hz 1200-1600W
- ⊙ HD-831S: 120/230V 50-60Hz 1200/1600W
- ⊙ Size of gift box: 215 x 80 x 115 mm
- ⊙ Size of carton: 498 x 442 x 250 mm 24pcs/CTN
- ⊙ Units 20' / 40' / 40' HQ : 12432/ 25512 / 28800 pcs



TRAVEL HAIR DRYER

HD-827

Function:

- ⊙ Foldable handle
- ⊙ DC motor
- ⊙ Concentrator
- ⊙ Switch for 0-1-2 setting
- ⊙ Hang up hook
- ⊙ Optional: Ionic Function
- ⊙ HD-827:220-240V 50-60Hz 1000-1200W
- ⊙ HD-827A:220-240V 50-60Hz 800-1000W
- ⊙ Size of gift box: 115x70x170 mm
- ⊙ Size of carton: 445x355x255 mm 24pcs/CTN
- ⊙ Units 20' / 40' / 40' HQ : 16968 / 34848 / 39312 pcs



HD-828

Function:

- ⊙ Foldable handle
- ⊙ DC motor
- ⊙ Concentrator
- ⊙ Switch for 0-1-2 setting
- ⊙ Cool shot function
- ⊙ Hang up hook
- ⊙ Optional: Ionic Function & Dual Voltage
- ⊙ HD-828: 220-240V 50-60Hz 1400-1600W
- ⊙ HD-828A: 220-240V 50-60Hz 1600W
- ⊙ HD-828S: 120/230V 50-60Hz 1400/1600W
- ⊙ Size of gift box: 120x85x235 mm
- ⊙ Size of carton: 495x270x490 mm 24pcs/CTN
- ⊙ Units 20' / 40' / 40' HQ : 10200/ 21360 /24960 pcs



HD-808

Function:

- ⊙ DC motor
- ⊙ Concentrator
- ⊙ Switch for 0-1-2 setting
- ⊙ Cool shot function
- ⊙ Hang up hook
- ⊙ Optional: Ionic Function / Dual Voltage
- ⊙ 220-240V 50-60Hz 1400-1800W
- ⊙ Size of gift box: 208 x 76 x 240 mm
- ⊙ Size of carton: 475 x 430 x 260 mm 12pcs/CTN
- ⊙ Units 20' / 40' / 40' HQ : 6432/ 13212 / 14916 pcs



HD-833

Function:

- ⊙ Foldable handle
- ⊙ DC motor
- ⊙ Concentrator
- ⊙ Switch for 0-1-2 setting
- ⊙ Cool shot function
- ⊙ Hang up hook
- ⊙ Optional: Ionic / Dual Voltage
- ⊙ HD-833/HD-833F: 220-240V 50-60Hz 1600W
- ⊙ HD-833S/HD-833SF: 120/230V 50-60Hz 1100/1400W
- ⊙ Size of gift box: 120 x 83 x 225 mm
- ⊙ Size of carton: 515 x 255 x 470 mm 24pcs/CTN
- ⊙ Units 20' / 40' / 40' HQ : 110888/ 22752 / 25680 pcs



HD-881

Function:

- ⊙ Foldable handle
- ⊙ DC motor
- ⊙ Concentrator
- ⊙ Switch for 0-cool-1-2 setting
- ⊙ Cool shot function
- ⊙ Hang up hook
- ⊙ Optional: Ionic Function
- ⊙ HD-881: 220-240V 50-60Hz 1400-1800W
- ⊙ HD-881A: 220-230V 50-60Hz 1600-1800W
- ⊙ Size of gift box: 125 x 85 x 200 mm
- ⊙ Size of carton: 415 x 355 x 395 mm 24pcs/CTN
- ⊙ Units 20' / 40' / 40' HQ : 11753/ 24126/ 27219 pcs

TRAVEL HAIR DRYER





TRAVEL HAIR DRYER

HD-8105

Function:

- ⊙ Concentrator
- ⊙ DC motor
- ⊙ Switch for 0-cool-1-2 settings
- ⊙ Foldable handle
- ⊙ Hang up hook
- ⊙ 220-240V~ 50-60Hz 1400W-1600W
- ⊙ Size of giftbox: 130x80x215mm
- ⊙ Size of carton: 420x280x450mm 20pcs/CTN
- ⊙ Unit 20'/40'/40'HQ: 10800/22800/26800 pcs



HD-8106

Function:

- ⊙ Concentrator
- ⊙ DC motor
- ⊙ Switch for 0-cool-1-2 settings
- ⊙ Foldable handle
- ⊙ Hang up hook
- ⊙ 220-240V~ 50-60Hz 1400W-1600W
- ⊙ Size of giftbox: 130x80x215mm
- ⊙ Size of carton: 420x280x450mm 20pcs/CTN
- ⊙ Unit 20'/40'/40'HQ: 10800/22800/26800 pcs



TRAVEL HAIR DRYER



HD-8101

Function:

- ◎ DC motor
- ◎ Switch for 0-1-2 settings
- ◎ Foldable handle
- ◎ Hang up hook
- ◎ 220-240V~ 50-60Hz 1000W-1200W
- ◎ Size of giftbox: 120x80x192mm
- ◎ Size of carton: 415x305x404mm 30pcs/CTN
- ◎ Unit 20' /40' /40' HQ: 15870/32940/38820 pcs



HD-8102

Function:

- ◎ DC motor
- ◎ Switch for 0-1-2 settings
- ◎ Foldable handle
- ◎ Hang up hook
- ◎ 220-240V~ 50-60Hz 1000W-1200W
- ◎ 110-120/220-240V~ 50-60Hz 1000W-1200W for HD-8102D (Dual voltage)
- ◎ Size of giftbox: 120x80x190mm
- ◎ Size of carton: 420x260x400mm 20pcs/CTN
- ◎ Unit 20' /40' /40' HQ: 13720/29220/33120 pcs

TRAVEL HAIR DRYER

HD-8103

Function:

- ◎ DC motor
- ◎ Switch for 0-1-2 settings
- ◎ Foldable handle
- ◎ Hang up hook
- ◎ 220-240V~ 50-60Hz 1000W-1200W
- ◎ Size of giftbox: 120x80x190mm
- ◎ Size of carton: 420x260x400mm 20pcs/CTN
- ◎ Unit 20'/40'/40'HQ: 13720/29220/33120 pcs



HD-8107

Function:

- ◎ DC motor
- ◎ Switch for 0-1-2 settings
- ◎ Mini Size
- ◎ Removable end cap
- ◎ 220-240V~ 50-60Hz 1300W-1500W
- ◎ Size of giftbox: 102x78x240mm
- ◎ Size of carton: 530x327x260mm 20pcs/CTN
- ◎ Unit 20'/40'/40'HQ: 12640/25960/29280 pcs



WALL-MOUNTED HAIR DRYER

HD-8301

Function:

- ◎ Wall-mounted Hair Dryer
- ◎ DC motor
- ◎ Low-0-High Speeds / Heat Settings
- ◎ Auto power off when hang the dryer onto base
- ◎ Removable inlet grill
- ◎ 220-240V~ 50/60Hz 1300W-1500W
- ◎ Size of giftbox: 135x100x300mm
- ◎ Size of carton: 435x420x320mm 12pcs/CTN
- ◎ Unit 20 /40 /40 HQ: 5544/11712/13764 pcs



HD-8302

Function:

- ◎ Wall-mounted Hair Dryer
- ◎ DC motor
- ◎ Low-0-High Speeds / Heat Settings
- ◎ Build-in ALCI plug
- ◎ Auto power off when hang the dryer onto base
- ◎ Removable inlet grill
- ◎ 125V 60Hz 1875W
- ◎ Size of giftbox: 135x100x300mm
- ◎ Size of carton: 435x420x320mm 12pcs/CTN
- ◎ Unit 20 /40 /40 HQ: 5544/11712/13764 pcs



HAIR STRAIGHTENER

JY-Z007

Function:

- ◎ LED Indication
- ◎ Ceramic or aluminum floating plate
- ◎ Lock & Unlock button
- ◎ Optional : Ionic Function
- ◎ On/off Switch
- ◎ 360°Swivel cord
- ◎ Adjustive temperature: 120-220°C
- ◎ Universal voltage: 110-240V 50-60Hz 40W
- ◎ Size of gift box: 320 x 85 x 53 mm
- ◎ Size of carton: 555 x 330 x 450 mm 50pcs/CTN
- ◎ Units 20' / 40' / 40' HQ : 17250 / 35500/ 40050 pcs



JY-Z004

Function:

- ◎ LED Indication
- ◎ Ceramic or aluminum plate
- ◎ On/off Switch
- ◎ 360°Swivel cord
- ◎ Top temperature: 170°C
- ◎ Universal voltage:

JY-Z004: 110-240V 50-60Hz 26W

JY-Z004A: 110-240V 50-60Hz 25W

◎ Size of gift box: 315 x85 x 53 mm

◎ Size of carton: 550x325x445 mm 50pcs/CTN

◎ Units 20' / 40' / 40' HQ : 17900 / 36800/ 41500 pcs



HAIR STRAIGHTENER

JY-Z006

Function:

- ◎ Aluminum plate
- ◎ Lock & Unlock button
- ◎ 360°Swivel cord
- ◎ Top temperature: 190 °C
- ◎ Universal voltage: 110-240V 50-60Hz 25-32W
- ◎ Size of gift box: 308 x 75 x 45 mm
- ◎ Size of carton: 475 x 320 x 400 mm 50pcs/CTN
- ◎ Units 20' / 40' / 40' HQ :23450 / 48100 / 54250 pcs



JY-Z002

Function:

- ◎ LCD Display
- ◎ Ceramic or aluminum plate
- ◎ Lock & Unlock button
- ◎ 360°Swivel cord
- ◎ Adjustive temperature: 150-230 °C
- ◎ Universal voltage: 110-240V 50-60Hz 45W
- ◎ Size of gift box: 335x85x45 mm
- ◎ Size of carton: 475 x 345 x 450 mm 50pcs/CTN
- ◎ Units 20' / 40' / 40' HQ : 19350 / 39700/ 44800 pcs



JY-Z001

Function:

- ⊙ LED Indication
- ⊙ Ceramic or aluminum plate
- ⊙ Lock & Unlock button
- ⊙ On/off Switch
- ⊙ 360°Swivel cord
- ⊙ Adjustive temperature: 120°C/150°C/170°C/200°C/230°C
- ⊙ Universal voltage: 110-240V 50-60Hz 38W
- ⊙ Size of gift box: 320 x 85 x 50 mm
- ⊙ Size of carton: 550 x 330 x 450 mm 50pcs/CTN
- ⊙ Units 20' / 40' / 40' HQ: 18250 / 37500/ 42300 pcs



JY-Z003

Function:

- ⊙ Ceramic or aluminum plate
- ⊙ Lock & Unlock button
- ⊙ On/off Switch
- ⊙ 360°Swivel cord
- ⊙ Top temperature: 200°C
- ⊙ Universal voltage: 110-240V 50-60Hz 36W-40W
- ⊙ Size of gift box: 320 x 85 x 45 mm
- ⊙ Size of carton: 470 x 330 x 445 mm 50pcs/CTN
- ⊙ Units 20' / 40' / 40' HQ: 20650 / 42400/ 47850 pcs



HAIR
STRAIGHTENER

JY-Z005

Function:

- ⊙ Aluminum plate
- ⊙ Lock & Unlock button
- ⊙ On/off Switch
- ⊙ 360°Swivel cord
- ⊙ Top temperature: 190℃
- ⊙ Universal voltage: 110-240V 50-60Hz 30W
- ⊙ Size of gift box: 320 x 75 x 45 mm
- ⊙ Size of carton: 475 x 330 x 400 mm 50pcs/CTN
- ⊙ Units 20' / 40' / 40' HQ : 22750 /46650/ 52650 pcs



JY-Z008 mini

Function:

- ⊙ Aluminum floating plate
- ⊙ PTC Heating Element
- ⊙ Left & Right hinged cover with Lock function
- ⊙ On/off Switch
- ⊙ 360°Swivel cord
- ⊙ Max temperature 200℃
- ⊙ Red LED indicator light
- ⊙ Universal voltage: 110 - 240V 50-60Hz 25W
- ⊙ Size of gift box: 240 x 35 x 40 mm
- ⊙ Size of carton: 375 x 250 x 225 mm 50pcs/CTN
- ⊙ Units 20' / 40' / 40' HQ : 67500 /138600/ 156400 pcs



HAIR STRAIGHTENER



JY-Z027

Function:

- ◎ Floating Plates
- ◎ On/off Switch
- ◎ 360°Swivel cord
- ◎ Max temperature 220 °C
- ◎ Universal voltage: 110 - 240V 50-60Hz 15W
- ◎ Size of gift box: 315 x85 x 53 mm
- ◎ Size of carton: :550x325x445mm 50pcs/CTN
- ◎ Units 20' / 40' / 40' HQ : 17900 /39700/ 41500 pcs



HS-7001

Function:

- ◎ 110-240V 50/60Hz 25W
- ◎ PTC heater
- ◎ On/Off switch
- ◎ Power indication light
- ◎ Max. temperature 200°C
- ◎ Lockable handle
- ◎ 360°swivel cable
- ◎ Size of giftbox: 50x65x320mm
- ◎ Size of carton: 335x275x270mm 20pcs/CTN
- ◎ Unit 20' /40' /40' HQ: 22680/48000/54440 pcs



HS-7001A

Function:

- ◎ Multi-function:
Hair curler & Hair straightener & Brush
- ◎ 110-240V 50/60Hz 25W
- ◎ PTC heater
- ◎ On/Off switch
- ◎ Interchangeable brush head
- ◎ Max. temperature 200°C
- ◎ Lockable handle
- ◎ 360°swivel cable
- ◎ Size of giftbox: 92x70x340mm
- ◎ Size of carton: 365x383x360mm 20pcs/CTN
- ◎ Unit 20' /40' /40' HQ: 10800/22800/26800 pcs



HAIR STRAIGHTENER



MINI HAIR STRAIGHTENER



HS-7002

Function:

- ◎ 110-240V 50/60Hz 25W
- ◎ PTC heater
- ◎ On/off switch
- ◎ Power indicator light
- ◎ Transparent cap
- ◎ Ceramic coating plate
- ◎ Max. temperature 200°C
- ◎ Size of giftbox: 63x63x224mm
- ◎ Size of carton: 335x235x398mm 30pcs/CTN
- ◎ Unit 20' /40' /40' HQ: 27270/56010/63180 pcs

CT-601

Function:

- ⊙ Aluminum & chrome Coating
- ⊙ On/off switch
- ⊙ 360°swivel cord
- ⊙ Top temperature: 180°C
- ⊙ 110-240V 50-60Hz 25W
- ⊙ Size of gift box: 325 x 75 x 45 mm
- ⊙ Size of carton: 380x335x245 mm 24pcs/CTN
- ⊙ Units 20' / 40' / 40' HQ : 21912 / 45000 / 50760 pcs

CT-622

Function:

- ⊙ On/off switch
- ⊙ 360°swivel cord
- ⊙ Top temperature: 200°C
- ⊙ 110-240V 50-60Hz 25W
- ⊙ Size of gift box: 395x100x45mm
- ⊙ Size of carton: 410x415x295 mm 24pcs/CTN
- ⊙ Units 20' / 40' / 40' HQ : 13680 / 28080 / 31680 pcs

CURLING TONG



CT-602

CURLING TONG

Function:

- ⊙ Aluminum & chrome Coating
- ⊙ LED Indication
- ⊙ On/off switch
- ⊙ 360°swivel cord
- ⊙ CT-602: 110-240V 50-60Hz 35W,top temperature :180°C±10°C
- ⊙ CT-602A: 110-240V 50-60Hz 25W,top temperature :190°C±10°C
- ⊙ CT-602B: 110-240V 50-60Hz 25W,top temperature :180°C±10°C
- ⊙ Size of gift box: 360 x 75 x 54 mm
- ⊙ Size of carton: 375 x 340 x 325 mm 24pcs/CTN
- ⊙ Units 20' / 40' / 40' HQ: 16512 / 33912 / 38256 pcs



CT-602



CT-602A

Ø25mm CURLING TONG



CT-602B

Ø19mm CURLING TONG

CURLING TONG

CT-603

Function:

- ⊙ Aluminum & chrome Coating
- ⊙ On/off switch
- ⊙ LED Indication
- ⊙ 360°swivel cord
- ⊙ CT-603: 110-240V 50-60Hz 35W, top temperature :180°C±10°C
- ⊙ CT-603A: 110-240V 50-60Hz 25W, top temperature :190°C±10°C
- ⊙ CT-603B: 110-240V 50-60Hz 25W, top temperature :180°C±10°C
- ⊙ Size of gift box: 360 x 75 x 54 mm
- ⊙ Size of carton: 375 x 340 x 325 mm 24pcs/CTN
- ⊙ Units 20' / 40' / 40' HQ : 16512 / 33912 / 38256 pcs



CT-603
CONICAL IRON

CT-603A
Ø25mm CURLING TONG

CT-603B
Ø19mm CURLING TONG

CT-607

Function:

- ⊙ Aluminum & chrome Coating
- ⊙ On/off switch
- ⊙ LED Indication
- ⊙ 360°swivel cord
- ⊙ CT-607A: 110-240V 50-60Hz 40-43W,top temperature :210°C±10°C
- ⊙ CT-607B: 110-240V 50-60Hz 47-50W,top temperature :210°C±10°C
- ⊙ Size of gift box: 360 x 75 x 54 mm
- ⊙ Size of carton: 375 x 340 x 325 mm 24pcs/CTN
- ⊙ Units 20' / 40' / 40' HQ : 16512 / 33912 / 38256 pcs



CT-607A
Ø19mm CURLING TONG



CT-607B
Ø25mm CURLING TONG

CT-608

Function:

- © Aluminum & chrome Coating
- © LCD Display
- © On/off switch
- © 360°swivel cord
- © CT-608A: 110-240V 50-60Hz 40-43W, top temperature :210 °C±10 °C
- © CT-608B: 110-240V 50-60Hz 47-50W, top temperature :210 °C±10 °C
- © Size of gift box: 360 x 75 x 54 mm
- © Size of carton: 375 x 340 x 325 mm 24pcs/CTN
- © Units 20' / 40' / 40' HQ: 16512 / 33912 / 38256 pcs



CT-608A
Ø19mm CURLING TONG



CT-608B
Ø25mm CURLING TONG



CT-9002

Function:

- One product achieve two culer size: 19mm and 32mm
- Curler diamater is changed by knob Spiral guid for easy curling
- Ready indicator light
- Auto shut off function
- PTC Heater
- 360 degree Swivel cord
- CT-7003T: Temperature control function 160°C-180°C-200°C
CT-7003: On/Off with LED indicator
- Size of giftbox: 82x53x360mm
- Size of carton: 375x265x340mm 20pcs/CTN
- Unit 20'/40'/40'HQ: 15840/33140/37704 pcs

CURLING TONG

CURLING TONG

CT-9003

Function:

- ◎ Foldable Handle
- ◎ 2 in 1 function: Curler & Brush
- ◎ 110-240V 50/60Hz 25W
- ◎ Max. temperature: 200°C
- ◎ On/Off switch
- ◎ 34mm curling tong
- ◎ 360° swivel cable
- ◎ Hanging-up loop
- ◎ Size of giftbox: 90x60x200mm
- ◎ Size of carton: 420x290x260mm 24pcs/CTN
- ◎ Unit 20' /40' /40' HQ: 20880/44112/51864 pcs



CURLING TONG

CT-9001

Function:

- ◎ 110~240V 50/60Hz 25W
- ◎ On/Off switch with LED indicator
- ◎ PTC Heater
- ◎ Curling tong with Ceramic/Chrome coating()
- ◎ Max. temperature:190°C
- ◎ 360 degree Swivel cord
- ◎ Size of giftbox: 330x335x45mm
- ◎ Size of carton: 345x3350x245mm 20pcs/CTN
- ◎ Unit 20' /40' /40' HQ: 19280/40700/47840 pcs



HOT AIR BRUSH



JY-218

Function:

- ◎ 8 attachments
- ◎ 360°swivel cord
- ◎ 0-cool-1-2 heat setting
- ◎ JY-218-1: 220-240V 50-60Hz 1000-1200W
- ◎ JY-218: 220-240V 50-60Hz 800-1000W
- ◎ Size of gift box: 400 x 280 x 67 mm
- ◎ Size of carton: 580 x 410 x 420 mm 12pcs/CTN
- ◎ Units 20' / 40' / 40' HQ : 3420 / 7020 / 7920 pcs

- A. Concentrator
- B. Half brush#1
- C. Half brush#2
- D. Small Point roll brush
- E. Big point roll brush
- F. Hair roller small Ø35mm
- G. Hair roller medium Ø40mm
- H. Hair roll big Ø55mm



FAR INFRARED HOT AIR BRUSH



HA-6001

Function:

- © Far Infrared Heater to provide health
- © DC motor
- © 220-240V 50/60Hz 450W
- © Black diamond oil infused bristles
- © 0-1-2 speed / heat settings
- © Light weight and compact design
- © 360 degree Swivel cord
- © Size of giftbox: 140x97x235mm
- © Size of carton: 435x405x255mm 12pcs/CTN
- © Unit 20' /40' /40' HQ: 7356/15276/18000 pcs



HAIR STRAIGHTENING COMB

JY-701

Function:

- © 110-240V,50-60Hz,60W
- © Five temperature levels, between 120-200 °C.
- © Short warm-up of 2 minutes.
- © Automatic shut-off after 60 minutes.
- © Ionic technology.
- © LED display
- © 360°swive power cord to prevent tangling
- © Straightening & Curling 2 in 1 Comb
- © Straightens using 37 high quality individual ceramic plates to ensure uniform heat application during brushing.
- © Size of gift box: 335x100x85 mm
- © Size of carton: 420x345x280 mm 12pcs/CTN
- © Units 20' / 40' / 40' HQ : 8424 / 17292/ 19512 pcs

