



hair straightener
expert

HAIR STRAIGHTENER



QUICK HAIR STYLER
FOR MEN

LOVE-191

110-240V~50/60Hz 25W/CE

110-120V~60Hz 25W/ETL

Unit Weight:135g

Unit dimension:19.2x3.2x6cm

Gift box:15.8x3.5x6.2cm

Master carton:36x20x17cm 30pcs/CTN

20'STD:74640pcs

40'STD:149610pcs

40'HQ:172020pcs

FEATURES

- Light and easy to travel
- Special folded design
- Special design for man
- Temperature control: 20-160°C
- Easy to get 3 hair styles
- Cool touch surface

HAIR STRAIGHTENER



Hair straightener

LOVE-186

110-240V~50/60Hz 40W/CE

110-120V~60Hz 40W/ETL

Unit Weight: 280g

Unit dimension: 23.7x5.1x4.2cm

Gift box: 30x8x5cm

Master carton: 32x31x34 24pcs/CTN

20'STD: 21024pcs

40'STD: 43872pcs

40'HQ: 49968pcs

FEATURES

Light and easy to travel

LCD display

Temperature display: 80-200°C

Univeral power cord, optional length

Massage design

Cool touch surface

Ceramic comb



HAIR STRAIGHTENER



Hair straightener

LOVE3

110-240V~50/60Hz 40W, 45W, 60W/CE

110-120V~60Hz 40W/ETL

Unit Weight: 330g

Unit dimension: 27.2x72x65cm

Gift box: 32.5x10.5x5.5cm

Master carton: 47x33.5x33.5cm 24pcs/CTN

20'STD: 13920pcs

40'STD: 26352pcs

40'HQ: 30432pcs

FEATURES

LCD display

Temperature control: 80-230°C

Univeral power cord, optional length

Massage design

Cool touch surface

Ceramic comb



HAIR STRAIGHTENER



Hair straightener

LOVE7

110-240V~50/60Hz 40W, 45W, 60W/CE

110-120V~60Hz 40W/ETL

Unit Weight: 365g

Unit dimension: 29.2x7.2x6.0cm

Gift box: 33.4x10.7x5.7cm

Master carton: 46.6x33.2x35.5/cm 24pcs/CTN

20'STD: 13920pcs

40'STD: 26352pcs

40'HQ: 30432pcs

Features

LCD display

Temperature control: 80-230°C

Universal power cord, optional length

Massage design

Breathing holes

Cool touch surface

Ceramic comb



PORE CLEANING APPARATUS



Pore cleaning apparatus

LOVE-178

Input voltage: 5VDC

Input current: 400mA

Battery capacitor: 400mAH

Charge: USB

Charge time: 1 hour

Discharge time: 45 minutes

Power: 4W

Suction: 60~65Kpa

Unit Weight: 290g

Unit dimension: 19.5x8.5x4.5cm

Gift box: 118X55X23cm

Master carton: 45.5x24x37cm 24pcs/CTN

20'STD: 17736 pcs

40'STD: 35352pcs

40'HQ: 40584pcs

Features

USB easy charge

3 adjustable speed

4 beauty heads

Big round hole head

Small round hole head

Microcrystalline head

STRAIGHT ENER



Hair straightener

LOVE205

110-240V~ 50/60Hz 26W

Maximum temperature: 210 degrees

Unit Weight: 270g(VDE-91g)

Unit dimension: 30.3x3.2x3.0cm

Gift box: 34.5x7.8x4.0cm

Master carton: 35.5x33.5x25.5cm 24pcs/CTN

20' STD: 24528pcs

40' STD: 48912pcs

40' HQ: 55992pcs

FEATURES:

Straight through LCD display

Univeral power cord, opotional length

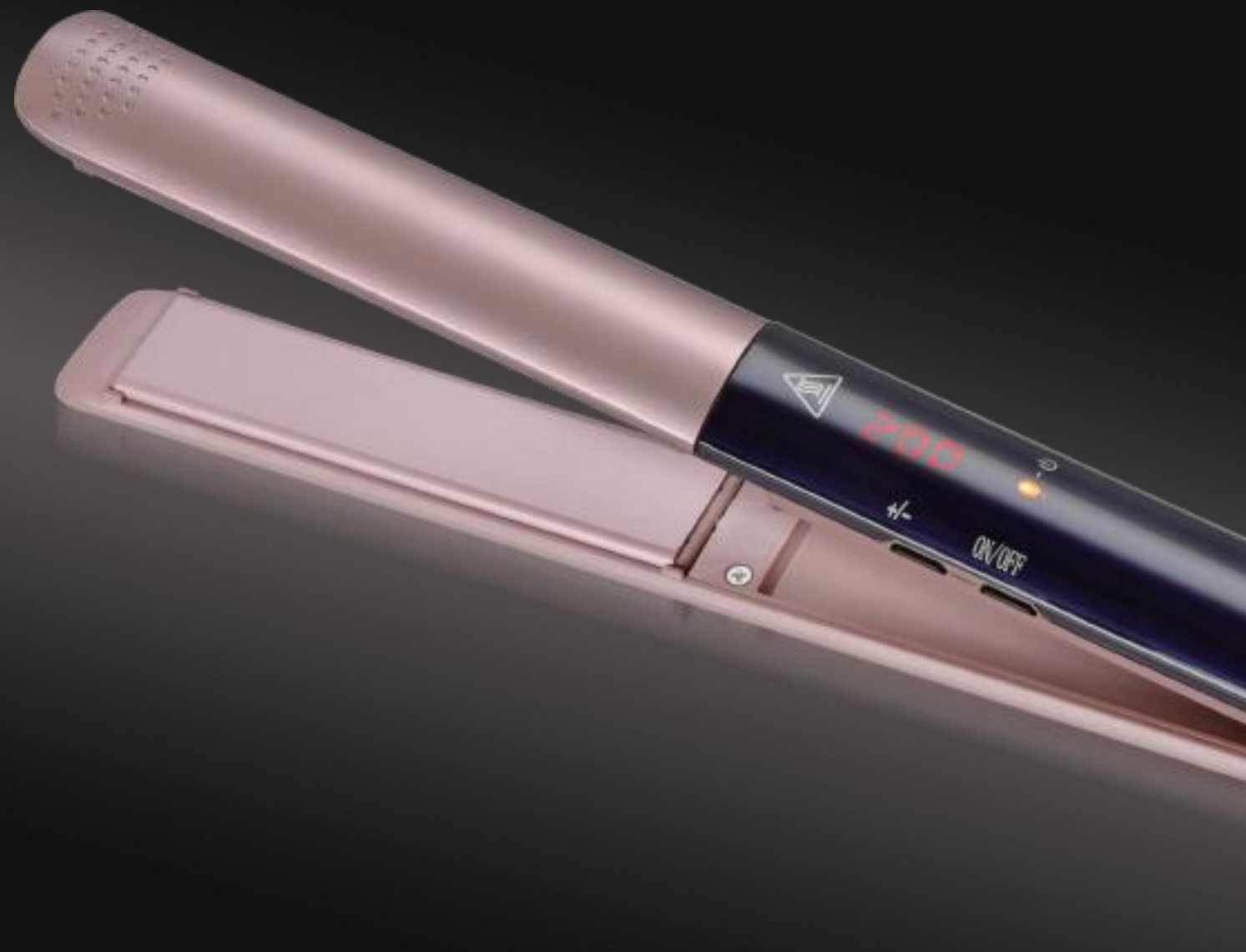
Massage desin

Cool touch surface

Ceramic comb



HAIR STRAIGHTENER



Hair straightener

LOVE206

110-240V~ 50/60Hz 26W

Maximum temperature: 210 degrees

Unit Weight: 270g(VDE-91g)

Unit dimension: 30.3x3.2x3.0cm

Gift box: 34.5x7.8x4.0cm

Master carton: 35.5x33.5x25.5cm 24pcs/CTN

20' STD: 24528pcs

40' STD: 48912pcs

40' HQ: 55992pcs

FEATURES:

Straight through LCD display

Univeral power cord, optional length

Massage desin

Cool touch surface

Ceramic comb



STRAIGHT ENER



Hair straightener

LOVE207

110-240V~ 50/60Hz 21W

Maximum temperature: 200 degrees

Unit Weight: 265g(VDE)

Unit dimension: 4.5x3.2x3.0cm

Gift box: 7.8x4.0x3.4cm

Master carton: 34x25.5x35.5cm 24pcs/CTN

20' STD: 23712pcs

40' STD: 48240pcs

40' HQ: 55320pcs

FEATURES:

Straight through LCD display

Univeral power cord, optional length

Massage desin

Cool touch surface

Ceramic comb



STRAIGHT ENER



Hair straightener

LOVE208

110-240V~ 50/60Hz 21W

Maximum temperature: 200 degrees

Unit Weight: 275g(VDE)

Unit dimension: 4.5x3.2x3.0cm

Gift box: 7.8x4.0x3.4cm

Master carton: 34x25.5x35.5cm 24pcs/CTN

20' STD: 23712pcs

40' STD: 48240pcs

40' HQ: 55320pcs

FEATURES:

Straight through LCD display

Univeral power cord, optional length

Massage desin

Cool touch surface

Ceramic comb



HAIR STRAIGHTENER



Hair straightener

LOVE209

110-240V~ 50/60Hz 21W

Maximum temperature: 200 degrees

Unit Weight: 280g (VDE)

Unit dimension: 4.5x3.2x3.0cm

Gift box: 7.8x4.0x3.4cm

Master carton: 34x25.5x35.5cm 24pcs/CTN

20' STD: 23712pcs

40' STD: 48240pcs

40' HQ: 55320pcs

FEATURES:

Straight through LCD display

Universal power cord, optional length

Massage design

Cool touch surface

Ceramic comb



STRAIGHT ENER



Hair straightener

LOVE198

110-240V~ 50/60Hz 20W

Maximum temperature: 200 degrees

Unit Weight: 230g(VDE)

Unit dimension: 26. 8x3. 2x2. 6cm

Gift box: 30. 3x7. 8x3. 6cm

Master carton: 30. 5x31. 3x25cm 24pcs/CTN

20' STD: 30312pcs

40' STD: 61488pcs

40' HQ: 70608pcs

FEATURES:

Straight through LCD display

Univeral power cord, opotional length

Massage desin

Cool touch surface

Ceramic comb

HAIR STRAIGHTENER

Hair straightener

LOVE199

110-240V~ 50/60Hz 25W

Maximum temperature: 200 degrees

Unit Weight: 260g(VDE)

Unit dimension: 4.2x4.2x2.5cm

Gift box: 33x7.7x6cm

Master carton: 33.2x31x36.2cm 24pcs/CTN

20' STD: 21000pcs

40' STD: 42000pcs

40' HQ: 48900pcs

FEATURES:

Straight through LCD display

Univeral power cord, optional length

Massage desin

Cool touch surface

Ceramic comb

